

Image: used under license from shutterstock.com



Earthquake-Resistant Construction from a (Re) Insurance Perspective

11 May 2023

Wilhelm Morales Avilés – NatCat Consultant

Munich RE 

01

Munich Re



02

Earthquake Insurance



03

Earthquake-Resilience Initiatives



04

Final comments





Munich Re Group is one of the world's leading risk carriers with more than **140 years** of unrivalled risk-related expertise.



... covers the entire value chain of **reinsurance, primary insurance, insurance related services** and **capital market solutions**.



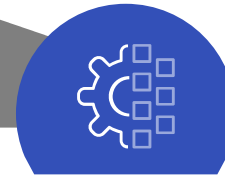
... maintains with **41,389 employees** a global presence in **50+ countries**.



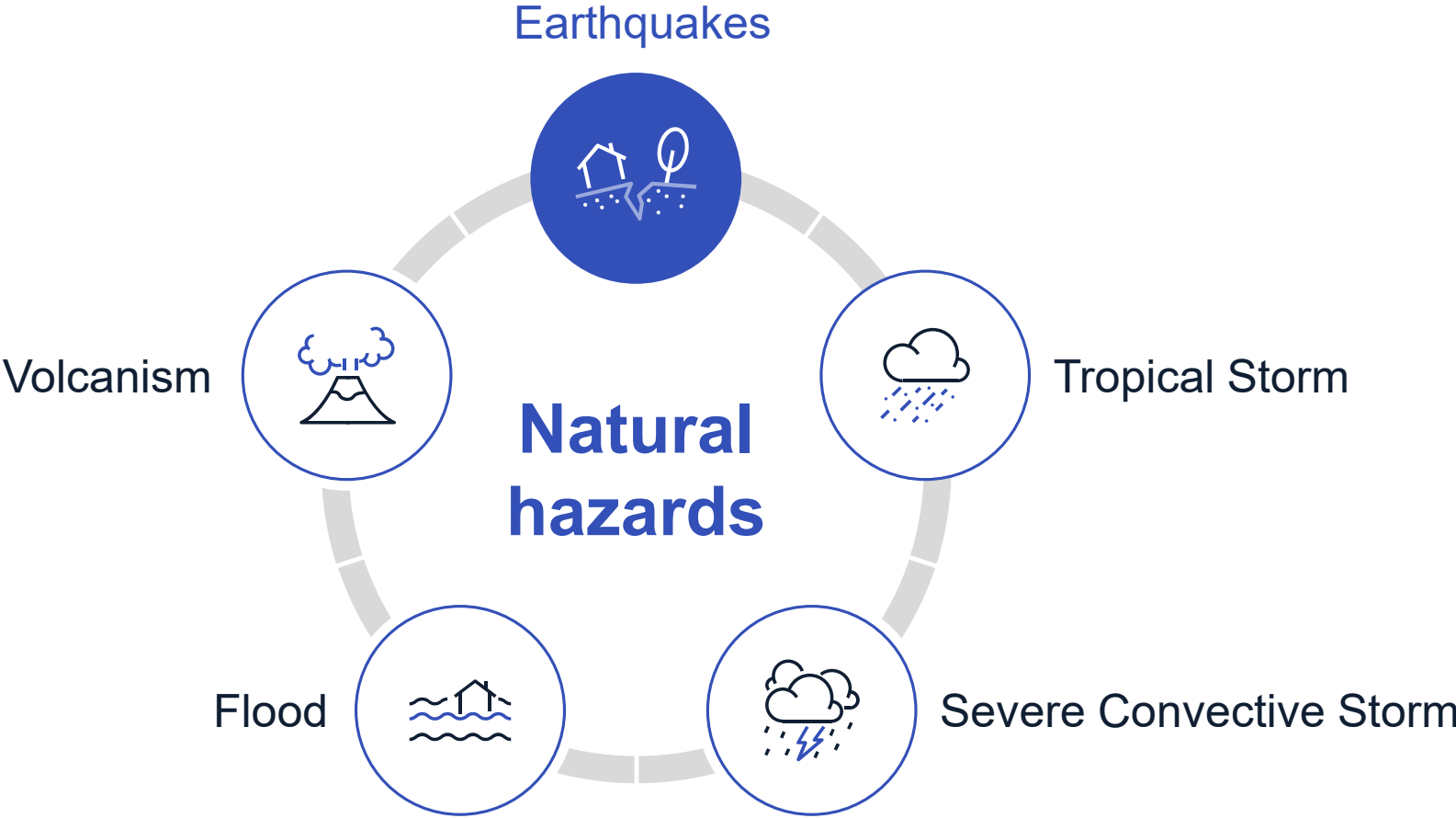
... plays a key role in addressing and insuring **climate risks** to make the world more resilient.



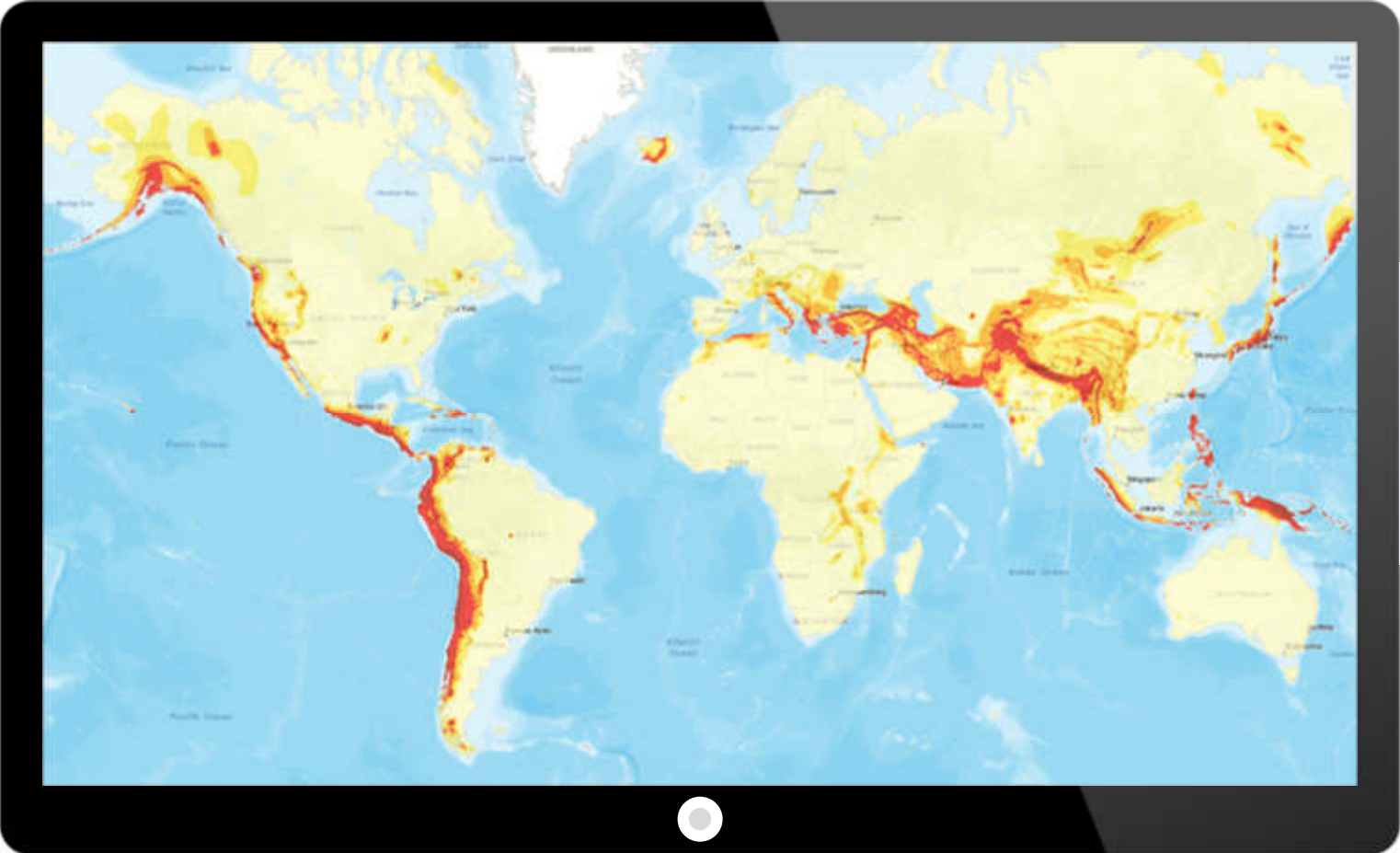
... provides coverage for extraordinary risks such as **rocket launches, renewable energies** or **cyberattacks**.



... drives the **digital transformation** of the insurance industry in order to push forward the boundaries of insurability.



Earthquake Insurance



EQ NATHAN Map from Munich Re

Earthquake Insurance



Types of coverages



Building



Content



Business interruption

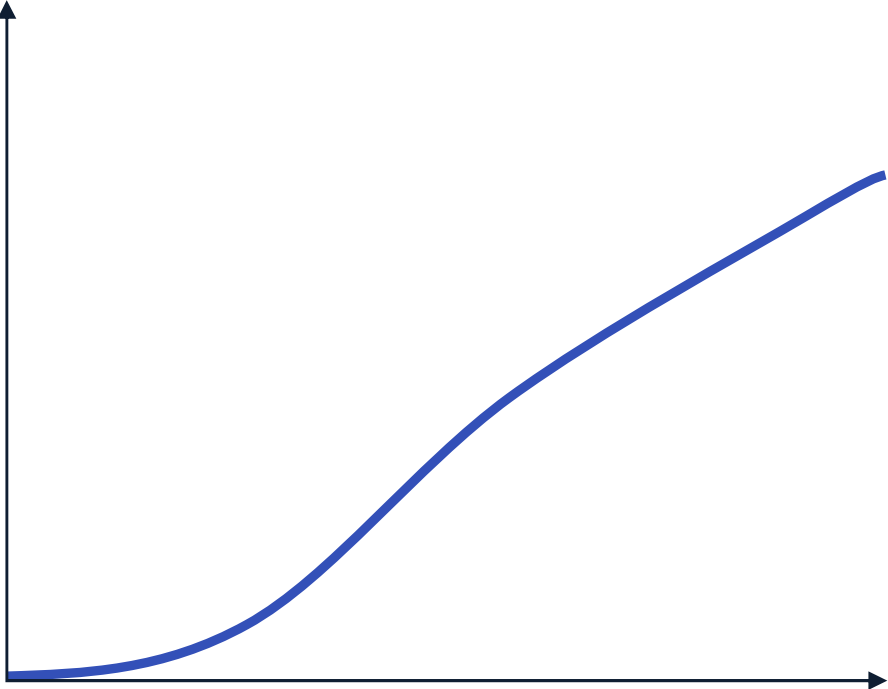
Earthquake Insurance



Image: irin717 / Getty Images

Vulnerability

Loss, damage ratio, fatalities, downtime, etc.



Ground shaking intensity (e.g., acceleration)

Earthquake Insurance



Material and structural system



Implicit construction standard



Number of storeys



Irregularities

Earthquake Resilience Initiatives



IDF: Public Schools in Peru



- Public-Private partnership
- Insurance partners + Modellers + InsurTech
- Increase resilience to Cat Events: Flood and EQ



Insurance Pools: Mexico, Turkey

FONDEN

Mexico's Natural Disaster Fund

Source: World Bank



COMPULSORY EARTHQUAKE INSURANCE

Source: Dask

Final Comments



Image: used under license from shutterstock.com

Image: used under license from shutterstock.com



Thank you for your attention!

11 May 2023

Wilhelm Morales Avilés – NatCat Consultant

Munich RE 